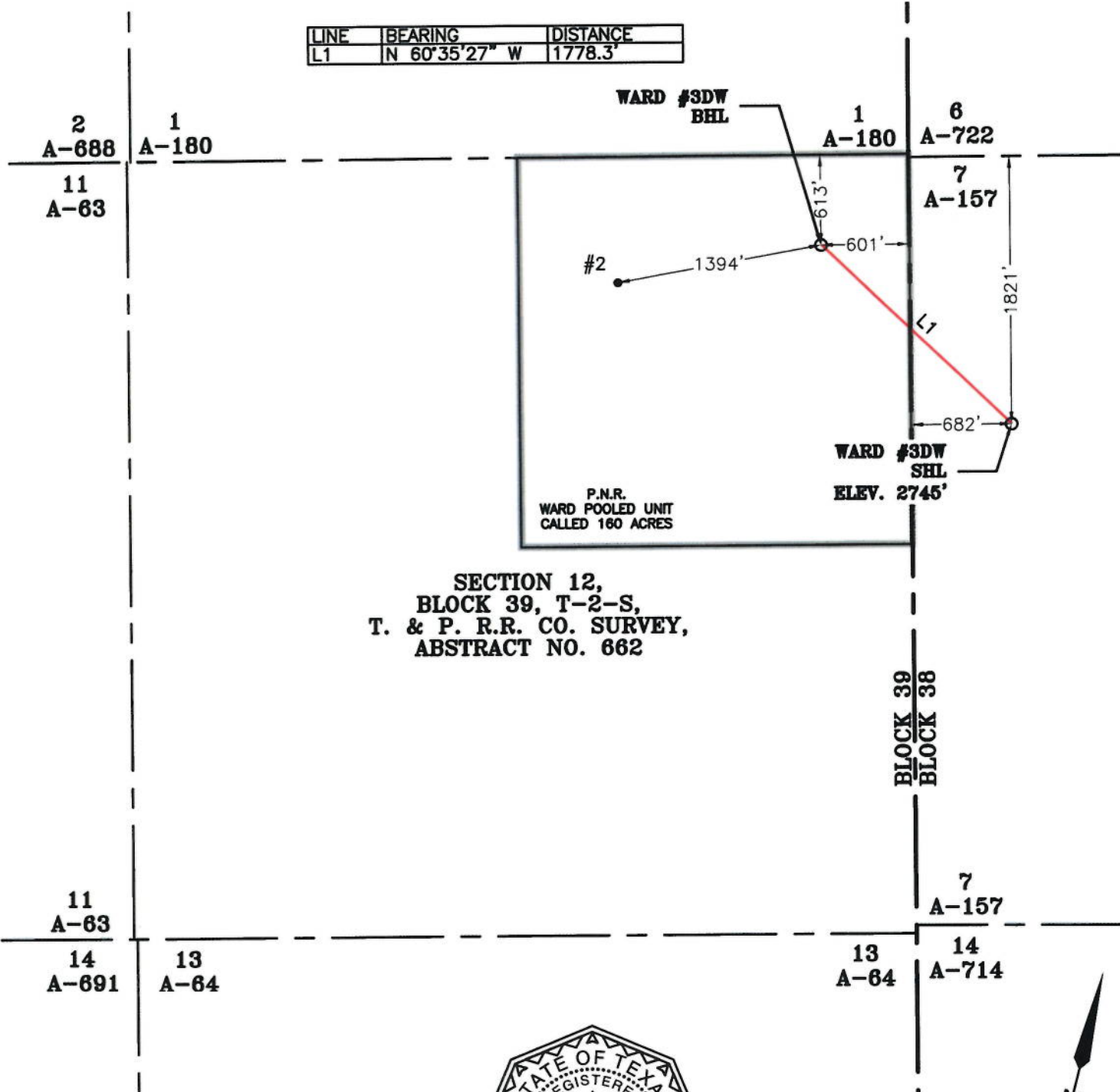
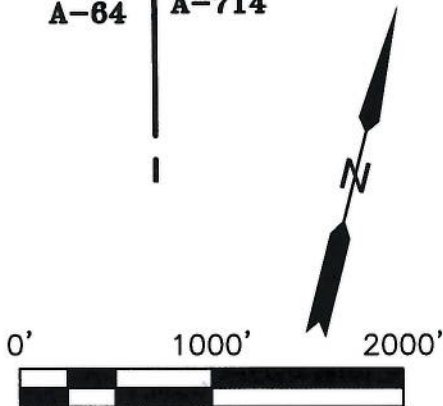


WARD #3DW	NORTHING (NAD27)	EASTING (NAD27)	LATITUDE (NAD 27)	LONGITUDE (NAD27)	SECTION LINE		LEASE LINE	
SURFACE HOLE LOCATION	843401.0	1471797.1	31.974463	102.036639	1821' N	682' W	1821' N	682' W
BOTTOM HOLE LOCATION	844274.2	1470248.0	31.976798	102.041677	613' N	601' E	613' N	601' E

LINE	BEARING	DISTANCE
L1	N 60°35'27" W	1778.3'



Hunter Wade Wills
09-27-2021



SCALE: 1" = 1000'

NOTES:

- THE BASIS OF BEARING OF THE SURVEY IS THE TEXAS COORDINATE SYSTEM, NORTH AMERICAN DATUM 1927 (NAD 27), CENTRAL ZONE (4203).
- ALL TEXAS STATE PLANE COORDINATES AND GEOGRAPHIC COORDINATES SHOWN HEREON ARE NAD 27 GRID COORDINATES AS COMPUTED BY CORPSCON VERSION 6.0.1.
- UNLESS OTHERWISE NOTED, ALL DISTANCES SHOWN HEREON ARE GRID DISTANCES AND THEY CAN BE CONVERTED TO SURFACE WHEN MULTIPLIED WITH A "SURFACE ADJUSTMENT FACTOR" OF 1.000021800 AS CALCULATED BY CORPSCON.
- THIS EXHIBIT IS FOR TEXAS RAILROAD COMMISSION WELL PERMITTING PURPOSES ONLY. BOUNDARY LINES AND ACREAGES SHOWN HEREON REFLECT THE SURVEYORS PROFESSIONAL OPINION OF MINERAL RIGHTS AS DETERMINED FROM CLIENT-PROVIDED OIL AND GAS MINERAL LEASE DOCUMENTATION. THE INFORMATION DEPICTED HEREON SHALL NOT BE USED IN THE CONVEYANCE OF FEE TITLE TO REAL PROPERTY.
- ALL MEASUREMENTS TO LEASE, UNIT AND SURVEY LINES ARE PERPENDICULAR TO SAID LINES.
- THIS SURVEY WAS PREPARED WITHOUT THE BENEFIT OF A TITLE REPORTS



HALFF

3300 NORTH A STREET, BUILDING 2, SUITE 120
MIDLAND, TX 79705-5471
TEL (432) 253-3255
TBPELS SURVEYING FIRM #10193998

DATE: 9/27/2021
BY: J. GONZALEZ
AVO: 39678.769

LEGEND

- PROPOSED WELL
- EXISTING WELL
- SECTION LINE
- BLOCK LINE
- /// LEASE LINE
- POOLED UNIT LINE

**PIONEER NATURAL
RESOURCES USA, INC.**

PERMIT PLAT

WARD #3DW

WARD POOLED UNIT
CALLED 160 ACRES

LOCATED IN
SECTION 7, BLOCK 38,
TOWNSHIP-2-SOUTH,
T. & P. R.R. CO. SURVEY,
ABSTRACT NO. 157,
SECTION 12, BLOCK 39,
TOWNSHIP-2-SOUTH,
T. & P. R.R. CO. SURVEY,
ABSTRACT NO. 662,
MIDLAND COUNTY, TEXAS