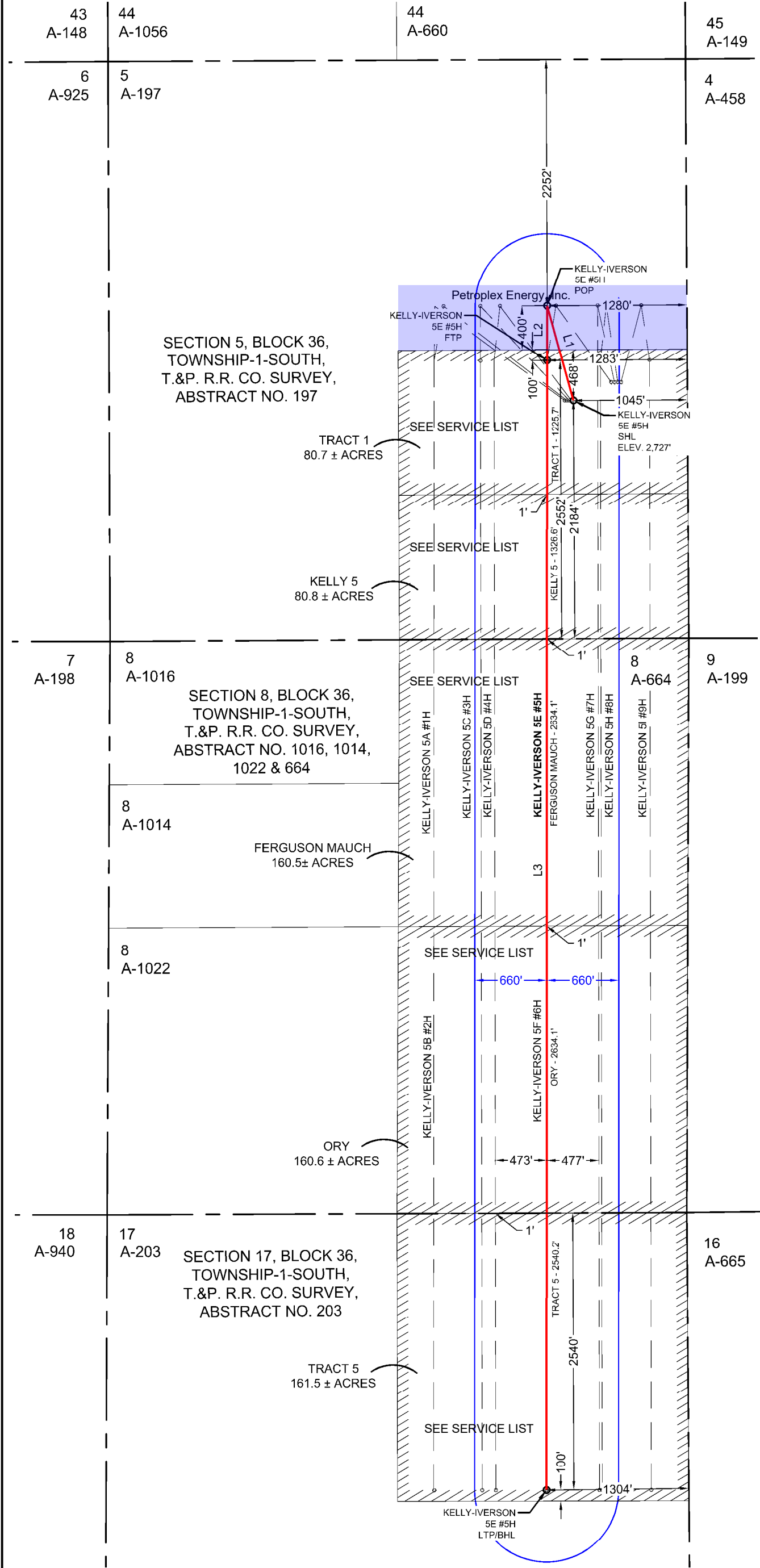


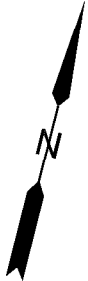
KELLY-IVERSON 5E #5H	EASTING (X) (NAD 27)	NORTHING (Y) (NAD 27)	LATITUDE (NAD 27)	LONGITUDE (NAD 27)	SECTION LINE		SECTION LINE		LEASE LINE		LEASE LINE		SECTION
					FOOTAGE	FNL/FSL	FOOTAGE	FEL\FWL	FOOTAGE	FNL/FSL	FOOTAGE	FEL\FWL	
SURFACE HOLE LOCATION (SHL)	1531066.5	906759.5	32.150953	-101.848319	2184'	FSL	1045'	FEL	468'	FNL	1045'	FEL	5
POINT OF PENETRATION (POP)	1530623.0	907542.6	32.153088	-101.849786	2252'	FNL	1280'	FEL	400'	FSL	1280'	FEL	5
FIRST TAKE POINT (FTP)	1530744.0	907057.4	32.151760	-101.849374	2552'	FSL	1283'	FEL	100'	FNL	1283'	FEL	5
LAST TAKE POINT/BOTTOM HOLE LOCATION (LTP/BHL)	1533251.1	897004.7	32.124225	-101.840835	2540'	FNL	1304'	FEL	100'	FSL	1304'	FEL	17



LINE	BEARING	DISTANCE
L1	N 29°31'35" W	900.0'
L2	S 14°00'15" E	500.0'
L3	S 14°00'14" E	10360.7'
TOTAL		11760.7'



Hunter Wade Wills
12/16/2022



SCALE: 1" = 1000'

NOTE: WELL IS LOCATED APPROXIMATELY 3.8 MILES NORTHWEST OF STANTON, MARTIN COUNTY, TEXAS

HALFF[®]
3300 NORTH A STREET, BUILDING 2, SUITE 120
MIDLAND, TX 79705-5471
TEL (432) 253-3255
TBPELS SURVEYING FIRM #10193998

DATE: 11/21/2022
BY: Y. BASCUE
AVO: 047474.225

LEGEND

- SECTION LINE
- LEASE LINE
- SUBJECT LATERAL
- PERMITTED LATERAL
- PROPOSED LATERAL
- RULE 38
- PROPOSED WELL
- EXISTING WELL

NOTES:

- THE BASIS OF BEARING OF THE SURVEY IS THE TEXAS COORDINATE SYSTEM, NORTH AMERICAN DATUM 1927 (NAD 27), CENTRAL ZONE (4203).
- ALL TEXAS STATE PLANE COORDINATES AND GEOGRAPHIC COORDINATES SHOWN HEREON ARE NAD 27 GRID COORDINATES AS COMPUTED BY CORPSCON VERSION 6.0.1. ALL GEOGRAPHIC COORDINATES SHOWN HEREON WERE CONVERTED USING CORPSCON VERSION 6.0.1. UNLESS OTHERWISE NOTED, ALL DISTANCES SHOWN HEREON ARE GRID DISTANCES AND THEY CAN BE CONVERTED TO SURFACE WHEN MULTIPLIED WITH A "SURFACE ADJUSTMENT FACTOR" OF 1.000165286, AS CALCULATED BY CORPSCON.
- ELEVATIONS SHOWN HEREON ARE NAVD88 AS DERIVED BY GPS.
- THIS EXHIBIT IS FOR TEXAS RAILROAD COMMISSION WELL PERMITTING PURPOSES ONLY. BOUNDARY LINES AND ACREAGE SHOWN HEREON REFLECT THE SURVEYORS PROFESSIONAL OPINION OF MINERAL RIGHTS AS DETERMINED FROM CLIENT-PROVIDED OIL AND GAS MINERAL LEASE DOCUMENTATION. THE INFORMATION DEPICTED HEREON SHALL NOT BE USED IN THE CONVEYANCE OF FEE TITLE TO REAL PROPERTY
- ALL MEASUREMENTS TO LEASE, UNIT, AND SURVEY LINES ARE PERPENDICULAR TO SAID LINES.
- THIS SURVEY WAS PREPARED WITHOUT THE BENEFIT OF A TITLE REPORT.

PIONEER NATURAL RESOURCES USA, INC.

PERMIT PLAT

KELLY-IVERSON 5E #5H

TRACT 1- 80.7 ± ACRES
KELLY 5 - 80.8 ± ACRES
FERGUSON MAUCH - 160.5± ACRES
ORY - 160.6 ± ACRES
TRACT 5 - 161.5 ± ACRES
TOTAL ACRES - 644.1± ACRES (SURFACE AREA)
LOCATED IN:

SECTION 5, BLOCK 36, TOWNSHIP-1-SOUTH, T.&P. R.R. CO. SURVEY, ABSTRACT NO. 197, SECTION 8, BLOCK 36, TOWNSHIP-1-SOUTH, T.&P. R.R. CO. SURVEY, ABSTRACT NO. 664, & SECTION 17, BLOCK 36, TOWNSHIP-1-SOUTH, T.&P. R.R. CO. SURVEY, ABSTRACT NO. 203, MARTIN COUNTY, TEXAS