

JOSE IGNACIO YBARBO  
A-60

XTO ENERGY INC  
VIKINGS DU  
591.272 ACRES

XTO ENERGY INC  
BUTLER ROONEY (SL) GAS UNIT

XTO ENERGY INC  
SOONERS DU

T. J. MARTIN  
A-193

XTO ENERGY INC.  
AGGIES DU  
683.503 ACRES

ANTHONY GRAY  
A-640

W. L. HARRELL  
A-151

W. A. BYRD  
A-498

DANIEL TEEL  
A-301

H. T. & B. R. R.  
A-156

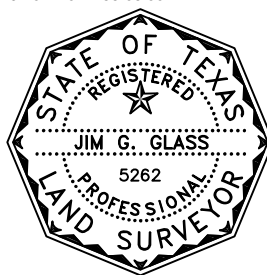
R. M. DAVIS  
A-643

WILLIAM SCURLOCK  
A-413

XTO ENERGY INC.  
HILLTOPPERS DU

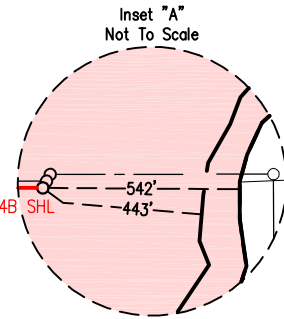
MARK CURL  
A-93

FOR THE EXCLUSIVE USE OF  
XTO ENERGY INC.  
STATE OF TEXAS — — — COUNTY OF SMITH  
I, Jim G. Glass, Registered Professional Land  
Surveyor, do hereby certify the above plat to be  
true and correct to the best of my knowledge.  
Date: March 19, 2024 Bullard, Texas  
E.L.S. SURVEYING & MAPPING, INC.  
Registered Professional Land Surveyor No. 5262



PRODUCTION LENGTH (FTP TO LTP)	
VIKINGS DU UNIT	398'
AGGIES DU UNIT	6194'
BLUE RAIDERS (SL) DU UNIT	3242'
JEWELL FALL	118'
SUTTON UNIT	623'
TOTAL	10575'

BORE PATH SUMMARY TABLE		
LINE	BEARING	DISTANCE
L1	N88°10'44"W	1588.14'
L2	S44°55'34"W	400.00'
L3	S00°04'26"E	10525.18
L4	S00°04'26"E	50.00'



(163.437 Ac.)  
872/177

Vol 66/236

See Inset "A"

(187.47 Ac.)  
9/588  
112/587

H. O. Butler, et ux

(107.95 Ac.)  
Hilliard Butler, et al  
9/588

(206.094 Ac.)  
Kenneth Garrett, et ux  
439/249

SAN AUGUSTINE COUNTY

MACGOGDOCHES COUNTY

PROPOSED BORE PATH VABR #4 #4B

Proposed Bore Path VABR #3 3B

Proposed Bore Path VABR #2 #2B

JOSE IGNACIO YBARBO  
A-60

AETHON ENERGY  
OPERATING, LLC  
CAYENNE UNIT  
422.110 ACRES

AETHON ENERGY  
OPERATING, LLC  
JEWELL FALL  
8.660 ACRES

SUTTON UNIT  
807.48 ACRES

Surface location is approximately  
11.7 miles SW of San Augustine, Tx.  
"CHIRENO SOUTH" Quadrangle

Location is staked from tract lines as evidenced by occupation,  
information obtained from the General Land Office and provided  
deed records. Distances shown are not intended to be definitive  
in establishing actual title boundaries. The deed data, tract acreages  
and unit data shown hereon was furnished by others. This is not  
a title survey. Vesting documents may not have been provided.  
Bearings and distances are based on the Texas State Plane Coordinate  
System, N.A.D. 27 (Central Zone) Derived from GPS Observations.

	OUTSIDE UNIT CALLS	SURVEY LOCATION	ELEV. (NAVD 88)	NAD 27 TEXAS STATE PLANE COORDINATES	NAD 27 GEOGRAPHIC COORDINATES (DD)	NAD 83 TEXAS STATE PLANE COORDINATES	NAD 83 GEOGRAPHIC COORDINATES (DD)
4B SHL	5635' FNL 542' FEL	705' FSL 443' FEL	195.4'	Y=717,194.71' X=3,877,338.65'	LAT.=31.4988050° LONG.=−94.3069455°	Y=10,559,780.07' X=4,173,816.35'	LAT.=31.4989880° LONG.=−94.3071465°
4B IP	5706' FNL 1261' FWL	1200' FSL 1313' FEL	---	Y=717,245.19' X=3,875,751.34'	LAT.=31.4991798° LONG.=−94.3120222°	Y=10,559,830.56' X=4,172,229.01'	LAT.=31.4993628° LONG.=−94.3122234°
4B PP/FTP	6028' FNL 971' FWL	843' FSL 1347' FEL	---	Y=716,961.98' X=3,875,468.86'	LAT.=31.4984443° LONG.=−94.3129763°	Y=10,559,547.35' X=4,171,946.53'	LAT.=31.4986274° LONG.=−94.3131776°
4B LTP	7033'Sc. FSL 3659'Sc. FEL	150' FSL 3659' FEL	---	Y=706,436.81' X=3,875,482.44'	LAT.=31.4695478° LONG.=−94.3147590°	Y=10,549,022.09' X=4,171,960.16'	LAT.=31.4697316° LONG.=−94.3149601°
4B BHL	6984'Sc. FSL 3662'Sc. FEL	100' FSL 3662' FEL	---	Y=706,386.74' X=3,875,482.51'	LAT.=31.4694103° LONG.=−94.3147675°	Y=10,548,972.02' X=4,171,960.23'	LAT.=31.4695941° LONG.=−94.3149686°

WELL LOCATION PLAT  
XTO ENERGY INC.  
VABR #4 #4B  
JOSE IGNACIO YBARBO, A-60  
NACOGDOCHES COUNTY, TEXAS  
SHEET 1 of 2

1000' 500' 0 1000'  
1" = 1000'

**ELM** SURVEYING & MAPPING INC.  
TBPELS Firm No. 100327-00  
21072 FM 2493 / Bullard, Texas 75757 / 903-581-7759

VIKINGS UNIT TRACT INFORMATION			
Tract No.	Acreage	Ownership	Vol./Pg.
1	(14.338 Ac.)	Iris N. Butler, et al	59/256
2	102.56 Ac.	James L. Pate	334/369, 307/138, Cause No. 10,866
3	(241.347 Ac.)	Kerry King Whitton	333/241
4	20.377 Ac.	State of Texas	
5	(212.650 Ac.)	Martindale Land & Cattle Co., LTD	872/177

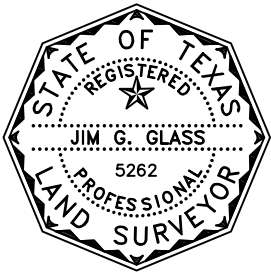
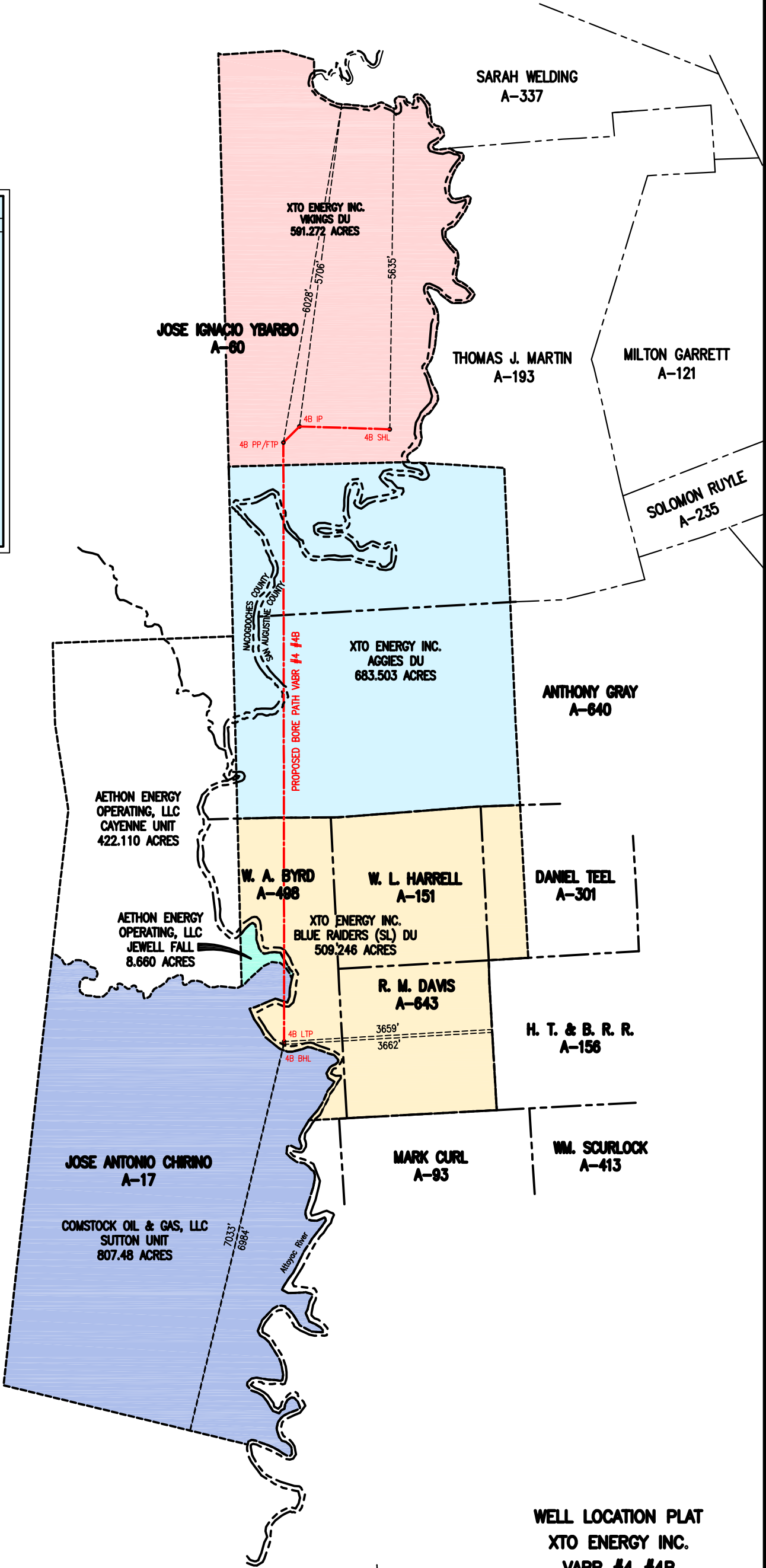
AGGIES UNIT TRACT INFORMATION			
Tract	Acreage	Ownership	Vol./Pg.
1	(39.50 Ac.)	LaTonya Kelley, et al	174/46
2	10.869 Ac.	LaFrancis Kelley, et al	277/277
3	(5.803 Ac.)	Hilliard Butler, et al, Trustees	174/46
4	(16.284 Ac.)	Michael J. McIver, et al	37/45
5	6.2 Ac.	Roger Glen Burks, et al	144/57
6	7.2 Ac.	Roger Glen Burks, et al	69/321
7	(3.24 Ac.)	Paralee Dodd, et al	144/57
8	(28.191 Ac.)	Stephen Wilson, et al	74/201
9	35.25 Ac.	Stephen Wilson	72/269
10	72.5 Ac.	Hilliard Butler, et al, Trustees	47/500
11	(85.26 Ac.)	The Butler Living Trust, et al	45/585 & 66/556
12a	(44.25 Ac.)	The Butler Living Trust, et al	95/88
12b	(11.82 Ac.)	Ernie Butler Keeling, et al	65/237 & 82/486
12c	(102.8 Ac.)	The Butler Living Trust, et al	9/588
12d	(9.37 Ac.)	The Butler Living Trust, et al	65/237 & 112/587
12e	(13.68 Ac.)	The Butler Living Trust, et al	112/587
12f	13.62 Ac.	The Butler Living Trust, et al	85/270 & 179/339
12g	24.45 Ac.	The Butler Living Trust, et al	85/270 & 179/339
13	(59.790 Ac.)	Martindale Land & Cattle Co. LTD	872/177
14	(50.288 Ac.)	Kenneth Garrett, et ux	439/249
15	(27.697 Ac.)	State of Texas	
16	(0.041 Ac.)	Sharon Busbee, et al	280/165
17	1.00 Ac.	Hazel Gregory, et al	39/480
18	1.44 Ac.	Van T. Woodson, et al	39/477
19	7.20 Ac.	Roger Dale Burks, et al	80/648
20	5.76 Ac.	Van T. Woodson, et al	144/57

BLUE RAIDERS UNIT TRACT INFORMATION			
Tract No.	Acreage	Ownership	Vol./Pg.
1	16 Ac.	JLSP - San Augustine LLC, et al	59/256
2	64.00 Ac.	Cindy Ellett Miciotto, et al	81/545
3	57.4 Ac.	JLSP - San Augustine LLC, et al	106/590 & 238/101
4	22.6 Ac.	Kay Sitton	106/590
5	(33.277 Ac.)	Kay Sitton, et al	106/21
6	53.33 Ac.	Blackwell Family Trust	99/8
7	(1.955 Ac.)	Beverly E. Lambert, et al	106/21
8	12 Ac.	Blackwell Family Trust	99/8
9	(65.69 Ac.)	Glenn Anderson, et al	99/8
10	(86.836 Ac.)	Glenn Anderson, et al	99/8
11	(23.887 Ac.)	Kay Sitton, et al	99/8
12	20 Ac.	Blackwell Family Trust	99/8
13	(10.647 Ac.)	Glenn Anderson, et al	81/429 & 164/112
14	(5.655 Ac.)	Glenn Anderson, et al	81/510
15	(6.753 Ac.)	Durwood Butler, et al	81/510
16	2.857 Ac.	Kay Sitton	114/251
17	7.143 Ac.	Cindy Ellett Miciotto, et al	137/210
18	7.5 Ac.	Michael Bradberry, et al	81/461
19	11.716 Ac.	State of Texas	

ADDITIONAL TRACT INFORMATION		
Tract No.	Acreage	Ownership
1	8.660 Ac. (Calc.)	Jewell Fall

SUTTON UNIT TRACT INFORMATION		
Tract No.	Acreage	Ownership
1	407.48 Ac.	B. M. Sutton, et al
2	400.00 Ac.	Gerald Mora

VABR #4 #4B	
Unit	Acres (Calcd)
Vikings DU Unit	591.272 Acres
Aggies DU Unit	683.503 Acres
Blue Raiders (SL) DU Unit	509.246 Acres
Jewell Fall (Calc.)	8.660 Acres
Sutton Unit	807.48 Acres
Total	2600.161 Acres



FOR THE EXCLUSIVE USE OF  
XTO ENERGY INC.  
STATE OF TEXAS - - - COUNTY OF SMITH  
I, Jim G. Glass, Registered Professional Land  
Surveyor, do hereby certify the above plat to be  
true and correct to the best of my knowledge.  
Date: March 19, 2024 Bullard, Texas  
E.L.S. SURVEYING & MAPPING, INC.  
Registered Professional Land Surveyor No. 5262  
03-19-2024 10:15:10-05:00

Location is staked from tract lines as evidenced by occupation,  
information obtained from the General Land Office and provided  
deed records. Distances shown are not intended to be definitive  
in establishing actual title boundaries. The deed data, tract acreages  
and unit data shown hereon was furnished by others. This is not  
a title survey. Vesting documents may not have been provided.  
Bearings and distances are based on the Texas State Plane Coordinate  
System, N.A.D. 27 (Central Zone) Derived from GPS Observations.

Surface location is approximately  
11.7 miles SW of San Augustine, Tx.  
"CHIRENO SOUTH" Quadrangle

WELL LOCATION PLAT  
XTO ENERGY INC.  
VABR #4 #4B  
JOSE IGNACIO YBARBO, A-60  
NACOGDOCHES COUNTY, TEXAS  
SHEET 2 of 2

2000' 1000' 0 2000'  
1" = 2000'  
E.L.S. SURVEYING & MAPPING INC.  
TBPELS Firm No. 100327-00  
21072 FM 2493 / Bullard, Texas 75757 / 903-581-7759